



AXOR ENTERPRISES

High Quality Instruments

Barber

INSTRUMENTS CATALOGUE

www.axor-enterprises.com



Company Profile

AXOR ENTERPRISES is the name of quality we here have adhered to the quality standards with quality not to be compromised.

We have been manufacturing these products since 2016 and has vast experience in these fields. We have created innovative and quality products for the comfort of our customers worldwide.

The designs displayed on our website are only a brief representation of our huge product range. Our manufacturing facilities are fully equipped and capable of producing any kind of Barber nstruments.



www.axor-enterprises.com

- Exporters ◀
- Wholesaler ◀
- Customization ◀
- Brand Your Own ◀
- Manufacturer & Supplier ◀
- Accept Customer's Designs ◀

Titanium Coated Hair Scissors

Barber instruments



AE-03-1001



AE-03-1002



AE-03-1003



AE-03-1004



AE-03-1005



AE-03-1006



AE-03-1007

AE-03-1008

Description:

These Super Sharp Titanium Coated Hair Scissors are made from Superior Japanese Hardened Stainless Steel. The Steel used for our Scissors is SUS 420c Japanese Stainless Steel with Rockwell Hardness 52-54HRC. The Adjustable Tension Screw allows for fine tuning and the razor edge blades make for smooth and quiet cutting. They have a superb slim profile design with a Removable Finger Rest for more accurate cutting. Finish: Classic Titanium Blue, Multi, Matt Black, Silver Dull, Silver Shine. Available Size: 4.5", 5", 5.5", 6", 6.5" and 7".

Titanium Coated Hair Scissors

Barber instruments



AE-03-1009



AE-03-1010



AE-03-1011



AE-03-10012



AE-03-1013



AE-03-1014



AE-03-1015



AE-03-1016

Description:

These Super Sharp Titanium Coated Hair Scissors are made from Superior Japanese Hardened Stainless Steel. The Steel used for our Scissors is SUS 420c Japanese Stainless Steel with Rockwell Hardness 52-54HRC. The Adjustable Tension Screw allows for fine tuning and the razor edge blades make for smooth and quiet cutting. They have a superb slim profile design with a Removable Finger Rest for more accurate cutting. Finish: Classic Titanium Blue, Multi, Matt Black, Silver Dull, Silver Shine. Available Size: 4.5", 5", 5.5", 6", 6.5" and 7".

Titanium Coated Hair Scissors

Barber instruments



AE-03-1009



AE-03-1010



AE-03-1011



AE-03-10012



AE-03-1013



AE-03-1014



AE-03-1015



AE-03-1016

Description:

These Super Sharp Titanium Coated Hair Scissors are made from Superior Japanese Hardened Stainless Steel. The Steel used for our Scissors is SUS 420c Japanese Stainless Steel with Rockwell Hardness 52-54HRC. The Adjustable Tension Screw allows for fine tuning and the razor edge blades make for smooth and quiet cutting. They have a superb slim profile design with a Removable Finger Rest for more accurate cutting. Finish: Classic Titanium Blue, Multi, Matt Black, Silver Dull, Silver Shine. Available Size: 4.5", 5", 5.5", 6", 6.5" and 7".

Titanium Coated Hair Scissors

Barber instruments



AE-03-1025



AE-03-1026



AE-03-1027



AE-03-1028



AE-03-1029



AE-03-1030

Description:

These Super Sharp Titanium Coated Hair Scissors are made from Superior Japanese Hardened Stainless Steel. The Steel used for our Scissors is SUS 420c Japanese Stainless Steel with Rockwell Hardness 52-54HRC. The Adjustable Tension Screw allows for fine tuning and the razor edge blades make for smooth and quiet cutting. They have a superb slim profile design with a Removable Finger Rest for more accurate cutting. Finish: Classic Titanium Blue, Multi, Matt Black, Silver Dull, Silver Shine. Available Size: 4.5", 5", 5.5", 6", 6.5" and 7".

Super Cut Hair Scissors

Barber instruments



AE-03-1101



AE-03-1103



AE-03-1102



AE-03-1104



AE-03-1105

Description:

These are Ergonomically designed and acutely balanced Barber Hairdressing Scissors. Manufactured from the highest quality Japanese J2 Stainless Steel treated razor blades for durable and sharp cutting edges with long lasting colorful finish. These Super Cut Hair Scissors are ideal for achieving smooth and precise cutting results with less strain on your hands.

Finish: Silver Dull, Silver Shine.

Available Size: 5.5", 6" (with thumb rest) Scissors ideal for Professionals, Students and Domestic use.

Super Cut Hair Scissors

Barber instruments



AE-03-1106



AE-03-1108



AE-03-1107



AE-03-1110

AE-03-1109

Description:

These are Ergonomically designed and acutely balanced Barber Hairdressing Scissors. Manufactured from the highest quality Japanese J2 Stainless Steel treated razor blades for durable and sharp cutting edges with long lasting colorful finish. These Super Cut Hair Scissors are ideal for achieving smooth and precise cutting results with less strain on your hands.

Finish: Silver Dull, Silver Shine.

Available Size: 5.5" (6" with thumb rest) Scissors ideal for Professionals, Students and Domestic use.

Super Cut Hair Scissors

Barber instruments



AE-03-1106



AE-03-1108



AE-03-1107



AE-03-1110



AE-03-1109

Description:

These are Ergonomically designed and acutely balanced Barber Hairdressing Scissors. Manufactured from the highest quality Japanese J2 Stainless Steel treated razor blades for durable and sharp cutting edges with long lasting colorful finish. These Super Cut Hair Scissors are ideal for achieving smooth and precise cutting results with less strain on your hands.

Finish: Silver Dull, Silver Shine.

Available Size: 5.5" (6" with thumb rest) Scissors ideal for Professionals, Students and Domestic use.

Hair Cutting & Thinning Scissors

Barber instruments



AE-03-1201



AE-03-1203



AE-03-1202



AE-03-1205



AE-03-1204

Description:

Super Sharp Hair Cutting & Thinning Scissors are made from Superior Japanese Hardened Stainless Steel. The Steel used for our Scissors is SUS 420c Japanese Stainless Steel with Rockwell Hardness 52-54HRC. The Adjustable Tension Screw allows for fine tuning and the razor edge blades make for smooth and quiet cutting. They have a superb slim profile design with a Removable Finger Rest for more accurate cutting. **Finish:** Silver Dull, Silver Shine. **Available Size:** 5.5", 6", 6.5" and 7".

Hair Cutting & Thinning Scissors

Barber instruments



AE-03-1206



AE-03-1208



AE-031210



AE-031209

Description:

Super Sharp Hair Cutting & Thinning Scissors are made from Superior Japanese Hardened Stainless Steel. The Steel used for our Scissors is SUS 420c Japanese Stainless Steel with Rockwell Hardness 52-54HRC. The Adjustable Tension Screw allows for fine tuning and the razor edge blades make for smooth and quiet cutting. They have a superb slim profile design with a Removable Finger Rest for more accurate cutting. **Finish:** Silver Dull, Silver Shine. **Available Size:** 5.5", 6", 6.5" and 7".

Barracuda Hair Scissors

Barber instruments



AE-03-1301



AE-03-1302



AE-03-1303



AE-03-1304



AE-03-1305



AE-03-1306



AE-03-1307



AE-03-1309

Description:

Barracuda Hair Scissors 20 layer laminate with a combination of harder and softer steels gives this scissor a soft feeling when going through hair. Barracuda Hair Scissors are made from Superior Japanese Hardened Stainless Steel. The Steel used for our Scissors is SUS 440 Japanese Stainless Steel with Rockwell Hardness 52-54HRC. With its Broad Leaf Blade Design, it is the ultimate slicing scissor.

Finish:

Multi, Matt Black, Silver Dull, Silver Shine or Gold.

Available Size: 6", 6.5" and 7"..

Economy Hair Cutting Thinning Scissor

Barber instruments



Description:

International is a manufacturer and exporters of Quality Professional Thinning Scissors, Thinning Shears, Texturing Shears, Texturing Blenders. We use Japanese Stainless Steel 420 J2. All scissors are Convex Edge, Hollow Ground. Whether you cut hair that is wet or dry, fine or coarse, straight or curly, our Thinning Shears are designed for you. International is proudly brought together with the finest materials to produce top performing Economic Thinning Scissors with Single Blade Teeth & Double Blade Teeth, designed for smooth snag free cutting. .
Finish: Matt Black, Silver Dull, Silver Shine, With Plastic Handle.
Available Size: 5.5", 6", 6.5" and 7"

Economy Hair Cutting Thinning Scissor

Barber instruments



AE-03-1410



AE-03-1412



AE-03-1413



AE-03-1411



AE-03-1414

AE-03-1415

Description:

International is a manufacturer and exporters of Quality Professional Thinning Scissors, Thinning Shears, Texturing Shears, Texturing Blenders. We use Japanese Stainless Steel 420 J2. All scissors are Convex Edge, Hollow Ground.

Whether you cut hair that is wet or dry, fine or coarse, straight or curly, our Thinning Shears are designed for you.

International is proudly brought together with the finest materials to produce top performing Economic Thinning Scissors with Single Blade Teeth & Double Blade Teeth, designed for smooth snag free cutting.

Finish: Matt Black, Silver Dull, Silver Shine, With Plastic Handle.

Available Size: 5.5", 6", 6.5" and 7"

Economy Hair Cutting Scissor

Barber instruments



One Blade
Micro
Serrated



AE-03-1504

One Blade
Micro
Serrated



One Blade
Micro
Serrated

Description:

Economy Barber Scissors made with special Quality Stainless Steel, Adjustable Screw for setting the required cutting actions. Professional barber hair dressing scissor with Convex Edge, Hollow Ground, Triple Hand Honed, Razor Blade, Adjustable Screw, Micro Serrated One Blade, with Silencer, Removable Finer Rings (Black), Excellent for Cutting and Shaping Hairs, Comfortable, Soft Finger Rings for an Excellent Grip. This professional tool is extremely sharp and highly suitable for Slice-Cutting. Vistar International is manufacturer and exporters of Quality Hairdressing Scissors carries a wide selection of Barber and Hair Scissors, along with thinning and texturing scissors s

Finish: Matt Black, Silver Dull, Silver Shine, With Plastic Handle.

Available Size: 5.5", 6", 6.5" and 7".

Economy Hair Cutting Scissor


Barber instrumentss



AE-03-1507



AE-03-1508



AE-03-1509



AE-03-1511



AE-03-1510



AE-03-1512

Description:


Economy Barber Scissors made with special Quality Stainless Steel, Adjustable Screw for setting the required cutting actions. Professional barber hair dressing scissor with Convex Edge, Hollow Ground, Triple Hand Honed, Razor Blade, Adjustable Screw, Micro Serrated One Blade, with Silencer, Removable Finer Rings (Black), Excellent for Cutting and Shaping Hairs, Comfortable, Soft Finger Rings for an Excellent Grip. This professional tool is extremely sharp and highly suitable for Slice-Cutting. Vistar International is manufacturer and exporters of Quality Hairdressing Scissors carries a wide selection of Barber and Hair Scissors, along with thinning and texturing scissors s

Finish: Matt Black, Silver Dull, Silver Shine, With Plastic Handle.

Available Size: 5.5", 6", 6.5" and 7". "

Economy Hair Cutting Scissor


Barber instruments



AE-03-1507



AE-03-1508



AE-03-1509



AE-03-1511



AE-03-1510



AE-03-1512

Description:

Economy Barber Scissors made with special Quality Stainless Steel, Adjustable Screw for setting the required cutting actions. Professional barber hair dressing scissor with Convex Edge, Hollow Ground, Triple Hand Honed, Razor Blade, Adjustable Screw, Micro Serrated One Blade, with Silencer, Removable Finer Rings (Black), Excellent for Cutting and Shaping Hairs, Comfortable, Soft Finger Rings for an Excellent Grip. This professional tool is extremely sharp and highly suitable for Slice-Cutting. Vistar International is manufacturer and exporters of Quality Hairdressing Scissors carries a wide selection of Barber and Hair Scissors, along with thinning and texturing scissors s

Finish: Matt Black, Silver Dull, Silver Shine, With Plastic Handle.

Available Size: 5.5", 6", 6.5" and 7". "

Economy Hair Cutting Scissor

Barber instruments



Description:

Economy Barber Scissors made with special Quality Stainless Steel, Adjustable Screw for setting the required cutting actions. Professional barber hair dressing scissor with Convex Edge, Hollow Ground, Triple Hand Honed, Razor Blade, Adjustable Screw, Micro Serrated One Blade, with Silencer, Removable Finer Rings (Black), Excellent for Cutting and Shaping Hairs, Comfortable, Soft Finger Rings for an Excellent Grip. This professional tool is extremely sharp and highly suitable for Slice-Cutting. Vistar International is manufacturer and exporters of Quality Hairdressing Scissors carries a wide selection of Barber and Hair Scissors, along with thinning and texturing scissors.

Finish: Matt Black, Silver Dull, Silver Shine, With Plastic Handle.

Available Size: 5.5", 6", 6.5" and 7".

Double Edge Safety Razors

Barber instruments



AE-BR-3001



AE-BR-3002



AE-BR-3003



AE-BR-3004



AE-BR-3005



AE-BR-3006

A double edge safety razor is a type of razor that uses double-sided blades to provide a close and precise shave. This type of razor is designed with safety in mind, as the blades are enclosed in a guard to prevent cuts and nicks on the skin. The double edge design also allows for longer use of the blade, as both sides can be used before needing to be replaced.



Double Edge Safety Razors

Barber instruments



AE-BR-3007



AE-BR-3008



AE-BR-3009



AE-BR-3010

A double edge safety razor is a type of razor that uses double-sided blades to provide a close and precise shave. This type of razor is designed with safety in mind, as the blades are enclosed in a guard to prevent cuts and nicks on the skin. The double edge design also allows for longer use of the blade, as both sides can be used before needing to be replaced.





AE-BA-1001



AE-BA-1002



AE-BA-1003



AE-BA-1004

Merkur 34C HD Double-Edge Safety Razor
by MerkurMK-9034001199 reviews | 17CDNS\$ 57.00
DESCRIPTIONSHIPPINGRETURNS
Superior performance and quality make the Merkur HD 34C Double-Edge Safety Razor is the best selling safety razor from DOVO Solingen.FEATURES
Closed combMild shaveRecommended for beginners
Knurled hand improves grip
Don't forget the blades! A razor blade sampler is the best way to determine which blade is best suited to individual skin types and razor types.
MATERIALSChrome-plated brassSPECSWeight: 2.4 oz (68 g) Length: 3 1/4" (8 cm)



Shaving Razor

Barber instruments



AE-BA-1101



AE-BA-1102



AE-BA-1103



AE-BA-1104

Professional quality straight razors make excellent gifts for fathers, brothers, nephews, or any entry-level groomer! Made from durable steel, our straight razor is designed for long-lasting use, with no rust! Complete with stylish matte black powder finish. Each straight razor measures approximately 8.5 inches long for a superior grip and precision grooming! Our straight razors have a rounded safety edge and lock-tight blade holder for secure blade insertion! When the blade dulls, simply insert a replacement for a fresh shave! Fits most blades (not included).



Professional Shaving Razors

Barber instruments



AE-03-2501



AE-03-2502



AE-03-2503



AE-03-2504



AE-03-2505



AE-03-2506



AE-03-2507



AE-03-2508



AE-03-2509

Description:

Wooden, Plastic & Stainless
Steel Handles Available

Professional Shaving Razors

Barber instruments



AE-03-2510



AE-03-2511



AE-03-2512



AE-03-2513



AE-03-2514



AE-03-2515



AE-03-2516



AE-03-2517



AE-03-2518



AE-03-2519

Description:

Wooden, Plastic & Stainless
Steel Handles Available

Wood Handle Razor

Barber instruments



AE-BR-3701



AE-BR-3702



AE-BR-3703



AE-BR-3704

A wood handle razor is a type of straight razor with a handle made from wood. The handle is carved to fit comfortably in the user's hand and provide a secure grip while shaving. The blade is attached to the handle using a pivot mechanism that allows it to be opened and closed. This type of razor has been used for centuries and is a traditional tool for men's shaving.



Wood Handle Razor

Barber instruments



AE-BR-3705



AE-BR-3706



AE-BR-3707



AE-BR-3708

A wood handle razor is a type of straight razor with a handle made from wood. The handle is carved to fit comfortably in the user's hand and provide a secure grip while shaving. The blade is attached to the handle using a pivot mechanism that allows it to be opened and closed. This type of razor has been used for centuries and is a traditional tool for men's shaving.



Wood Handle Razor

Barber instruments



AE-BR-3709



AE-BR-3710



AE-BR-3711



AE-BR-3712

A wood handle razor is a type of straight razor with a handle made from wood. The handle is carved to fit comfortably in the user's hand and provide a secure grip while shaving. The blade is attached to the handle using a pivot mechanism that allows it to be opened and closed. This type of razor has been used for centuries and is a traditional tool for men's shaving.



Stainless Steel Razors

Barber instruments



AE-BR-3501



AE-BR-3502



AE-BR-3503



AE-BR-3504

Straight shaving razors, also known as cut-throat razors or straight razors, are a type of razor with a single, straight blade attached to a handle. This type of razor is known for its traditional feel and precise shave, making it an ideal choice for those who desire a classic shaving experience. The blade of a straight razor is honed to a sharp edge, allowing for a close and precise shave. The handle is typically made of materials like wood, ivory, or stainless steel and may have a weighty feel to it, providing stability and control while shaving.



Stainless Steel Razors

Barber instruments



AE-BR-3505



AE-BR-3506



AE-BR-3507



AE-BR-3508

Straight shaving razors, also known as cut-throat razors or straight razors, are a type of razor with a single, straight blade attached to a handle. This type of razor is known for its traditional feel and precise shave, making it an ideal choice for those who desire a classic shaving experience. The blade of a straight razor is honed to a sharp edge, allowing for a close and precise shave. The handle is typically made of materials like wood, ivory, or stainless steel and may have a weighty feel to it, providing stability and control while shaving.



Stainless Steel Razors

Barber instruments



AE-BR-3509



AE-BR-3510



AE-BR-3511



AE-BR-3512

Straight shaving razors, also known as cut-throat razors or straight razors, are a type of razor with a single, straight blade attached to a handle. This type of razor is known for its traditional feel and precise shave, making it an ideal choice for those who desire a classic shaving experience. The blade of a straight razor is honed to a sharp edge, allowing for a close and precise shave. The handle is typically made of materials like wood, ivory, or stainless steel and may have a weighty feel to it, providing stability and control while shaving.



Straight Shaving Razors

Barber instruments



AE-BR-3601



AE-BR-3602



AE-BR-3603



AE-BR-3604

Straight shaving razors, also known as cut-throat razors or straight razors, are a type of razor with a single, straight blade attached to a handle. This type of razor is known for its traditional feel and precise shave, making it an ideal choice for those who desire a classic shaving experience. The blade of a straight razor is honed to a sharp edge, allowing for a close and precise shave. The handle is typically made of materials like wood, ivory, or stainless steel and may have a weighty feel to it, providing stability and control while shaving.



Straight Shaving Razors

Barber instruments



AE-BR-3605



AE-BR-3606



AE-BR-3607



AE-BR-3608

Straight shaving razors, also known as cut-throat razors or straight razors, are a type of razor with a single, straight blade attached to a handle. This type of razor is known for its traditional feel and precise shave, making it an ideal choice for those who desire a classic shaving experience. The blade of a straight razor is honed to a sharp edge, allowing for a close and precise shave. The handle is typically made of materials like wood, ivory, or stainless steel and may have a weighty feel to it, providing stability and control while shaving.



Plastic Handle Razor

Barber instruments



AE-BR-3101



AE-BR-3102

A plastic handle razor is a type of razor with a handle made of plastic material. The handle is designed to be lightweight, making it easy to grip and control while shaving. It is also designed to be durable, providing long-lasting use and resisting wear and tear over time.



Barber Braceletes

Barber instruments



AE-03-2601

AE-03-2602



AE-03-2603



AE-03-2604



AE-03-2606



AE-03-2607



AE-03-2605

AE-03-2609



AE-03-2608

Description:

Stainless Steel Bracelet for men or women
Can be worn on wrist or upper forearm
Bracelet is the perfect accessory for you
to bring out your Creativity on style It is
a decorative shear bracelet This is sure
to be a conversation piece with customers
& other stylists. These are made from same
steel quality as other Salon shears
Makes a great gift for Salon owners,
school owners or any stylists or student.

Capes

Barber instruments



AE-BA-901



AE-BA-902



AE-BA-903



AE-BA-904

This cloth is waterproof, breathable, non-stick, and easy to clean. Cover the cut hair during the haircut, keep it clean, protect the clothing from contamination during the hair dyeing process, and the fabric is thick and comfortable with full drape. Non-stick, anti-static, hanging buckle, bright color, soft and smooth fabrics, good hand feel, perm, hair dye, hair cut, oil, electric hair, etc. Applicable cloth to prevent clothes from staining hair.

Wooden Shaving Bowls

Barber instruments



AE-BA-801



AE-BA-802



AE-BA-803



AE-BA-804

Wenge Wood Shaving Bowl Almond Shaving Soap, with its precious and timeless design, is a must for those who love style. The razor bowl is made of finest wenga wood and created to withstand water.



Combs

Barber instruments



AE-BA-601



AE-BA-602



AE-BA-603



AE-BA-604

Our Barber Comb Set includes two Barber Combs and two Hair Cutting Combs. This Barber carbon comb gets you precise looks when it comes to styling your hair and taming those flyaways. It's also great for tight tapers and cuts. The Hair Cutting Comb is the best comb for the simple man. Its flexible teeth allows for breakage-free strokes. It's also chemical-resistant and static-free, great for professional cuts as well.

Benefits:
Heat-resistant
Carbon
Chemical-resistant

Scissor Stand

Barber instruments



AE-BA-501

Sit down Watercraft In Water Scissor Stand.
This item may ship in either polished or black depending on availability.
Bunk length 46"



AE-BA-502



AE-BA-503



AE-BA-504



Hair Care Kits

Barber instruments



AE-03-3110



AE-03-3111



AE-03-3112

AE-03-3113



AE-03-3114

AE-03-3115



AE-03-3116



AE-03-3117



AE-03-3118

Description:

EXTREMELY SHARP BLADES: Made of 100% Japanese (420) stainless steel with Has excellent performance which will not damage or split hair ends

Hair Care Kits

Barber instruments



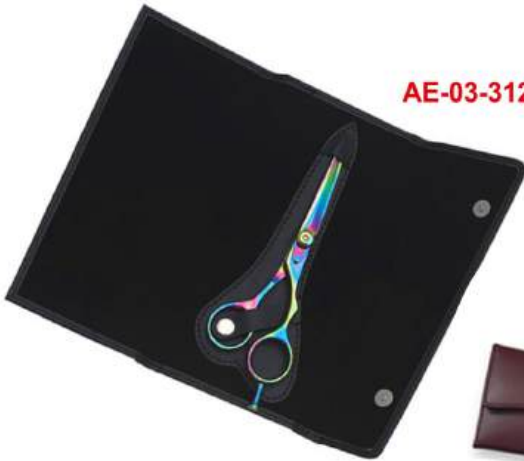
AE-03-3119



AE-03-3120



AE-03-3121



AE-03-3122



AE-03-3123



AE-03-3124



AE-03-3125



AE-03-3126



AE-03-3127

Description:

EXTREMELY SHARP BLADES: Made of 100% Japanese (420) stainless steel with Has excellent performance which will not damage or split hair ends

Barber Kits

Barber instruments



AE-BI-3801



AE-BI-3802



**Wooden
Shaving Set**

AE-BI-383





AE-BI-384



Barber Kits

Barber instruments



AE-BI-385





AE-BI-386





AE-BI-387



AE-BI-388





AE-BI-389



AE-BI-390





AE-BI-391



AE-BI-392



Barber Machine

Barber instruments



AE-BI-393

Barber Machine

Barber instruments



AE-BI-395



AE-BI-396



AE-BI-397

Barber Machine

Barber instruments



AE-BI-399



10mm



AE-BI-400



13mm



AE-BI-401



3mm



AE-BI-402



6mm



Barber Machine

Barber instruments



AE-BI-403



AE-BI-404



Barber Machine

Barber instruments



AE-BI-405



AE-BI-406

Barber Razors With Wooden Box

Barber instruments



AE-BI-407

AE-BI-408



Barber Razors With Wooden Box

Barber instruments



AE-BI-409

AE-BI-410



Barber Razors With Wooden Box

Barber instruments



AE-BI-411

AE-BI-412





AE-BI-412



AE-BI-413



AE-BI-414



AE-BI-415



AE-BI-416



AE-BI-417



AE-BI-418



AE-BI-419